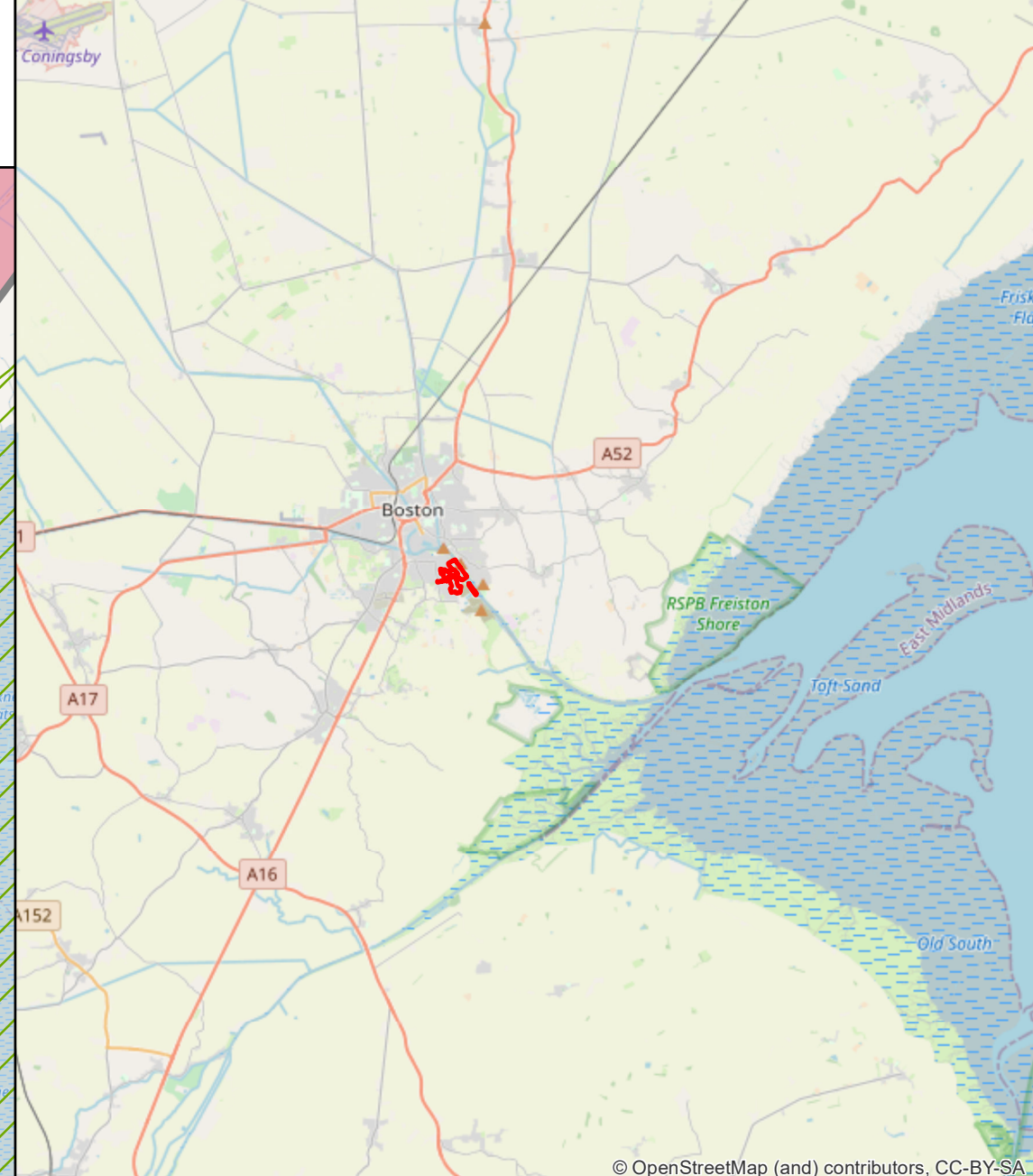
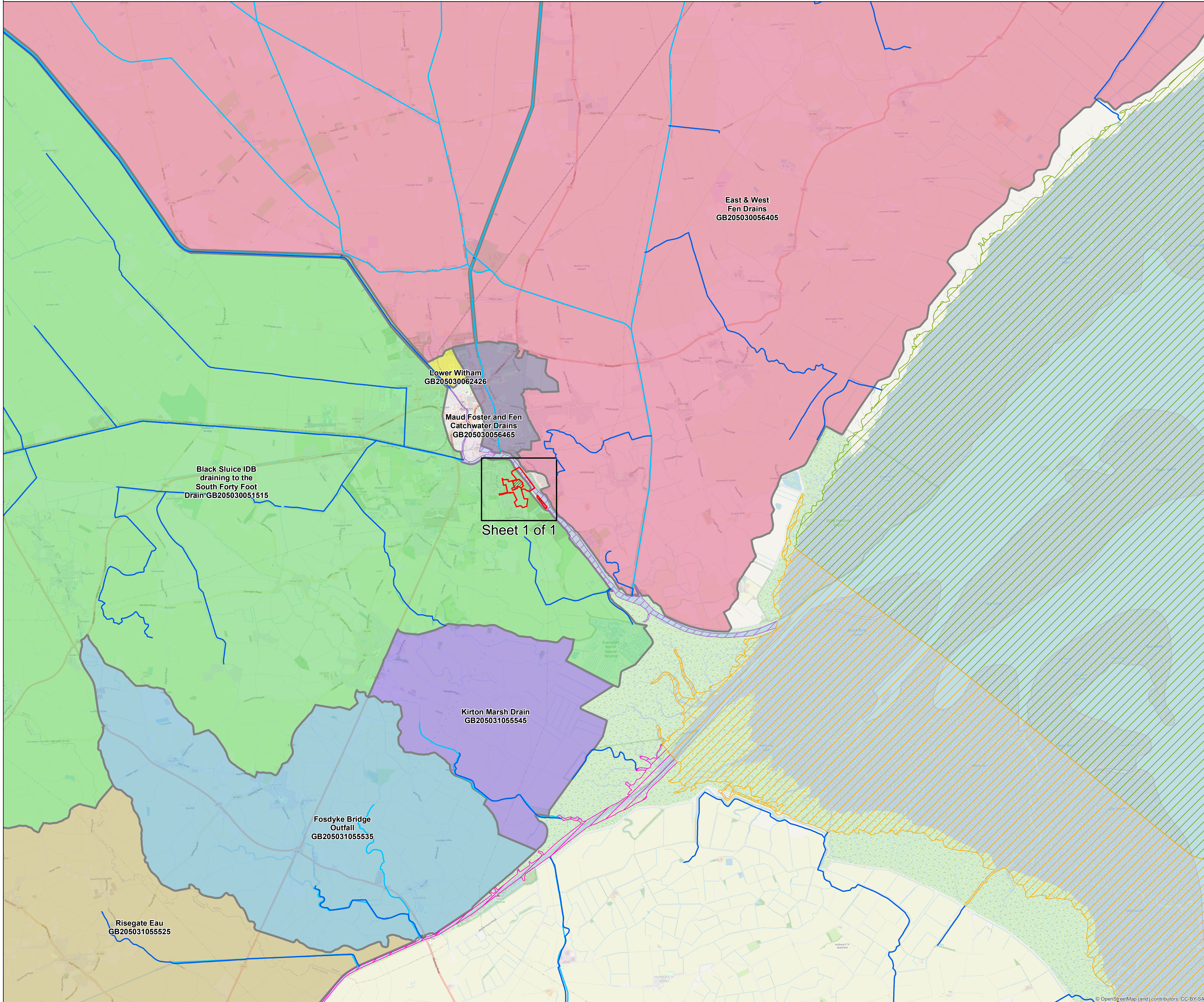
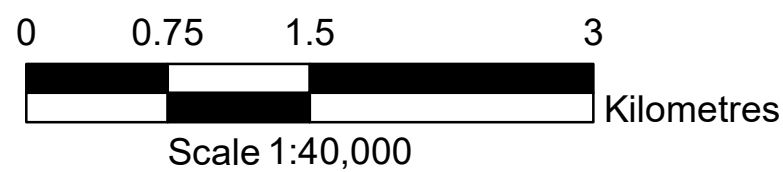


**BOSTON ALTERNATIVE ENERGY FACILITY DEVELOPMENT CONSENT ORDER**  
**Regulation 5(2)(o) Overview of**  
**Water Bodies in a River Basin Management Plan**  
**BOSTON BOROUGH COUNCIL - Sheet 1 of 1**



**Key**

Order limits	Risegate Eau
Habitat Mitigation Area	Water Framework Directive (WFD) Transitional and Coastal Water Bodies
Land outside Order limits	Wash Inner
Water Framework Directive (WFD) River Water Body Catchment Area	Wash Outer
Black Sluice IDB draining to the South Forty Foot Drain	Welland
Witham	Water Framework Directive (WFD) River Water Bodies
Fosdyke Bridge Outfall	River Transfer Water Bodies
Kirton Marsh Drain	
Lower Witham	
Maud Foster and Fen Catchwater Drains	

Note: Scale is for context purposes.

**Royal HaskoningDHV**  
*Enhancing Society Together*

Rightwell House,  
 Bretton,  
 Peterborough, PE3 8DW  
 Tel +44 (0)1733 334455  
 Email [info.peterborough@rhdhv.com](mailto:info.peterborough@rhdhv.com)  
 Website [www.royalhaskoningdhv.com](http://www.royalhaskoningdhv.com)

APPLICANT **ALTERNATIVE USE  
 BOSTON PROJECTS LTD**

Disclaimer  
 Do not scale from this drawing. Check all dimensions on site before fabrication or setting out. This document is copyright and may not be reproduced without permission of the owner.

REPRODUCED FROM ORDNANCE SURVEY MAPS  
 WITH PERMISSION FROM  
 THE CONTROLLER OF  
 HER MAJESTY'S STATIONERY OFFICE.  
 CROWN COPYRIGHT RESERVED.  
 LICENCE NUMBER. 100017728

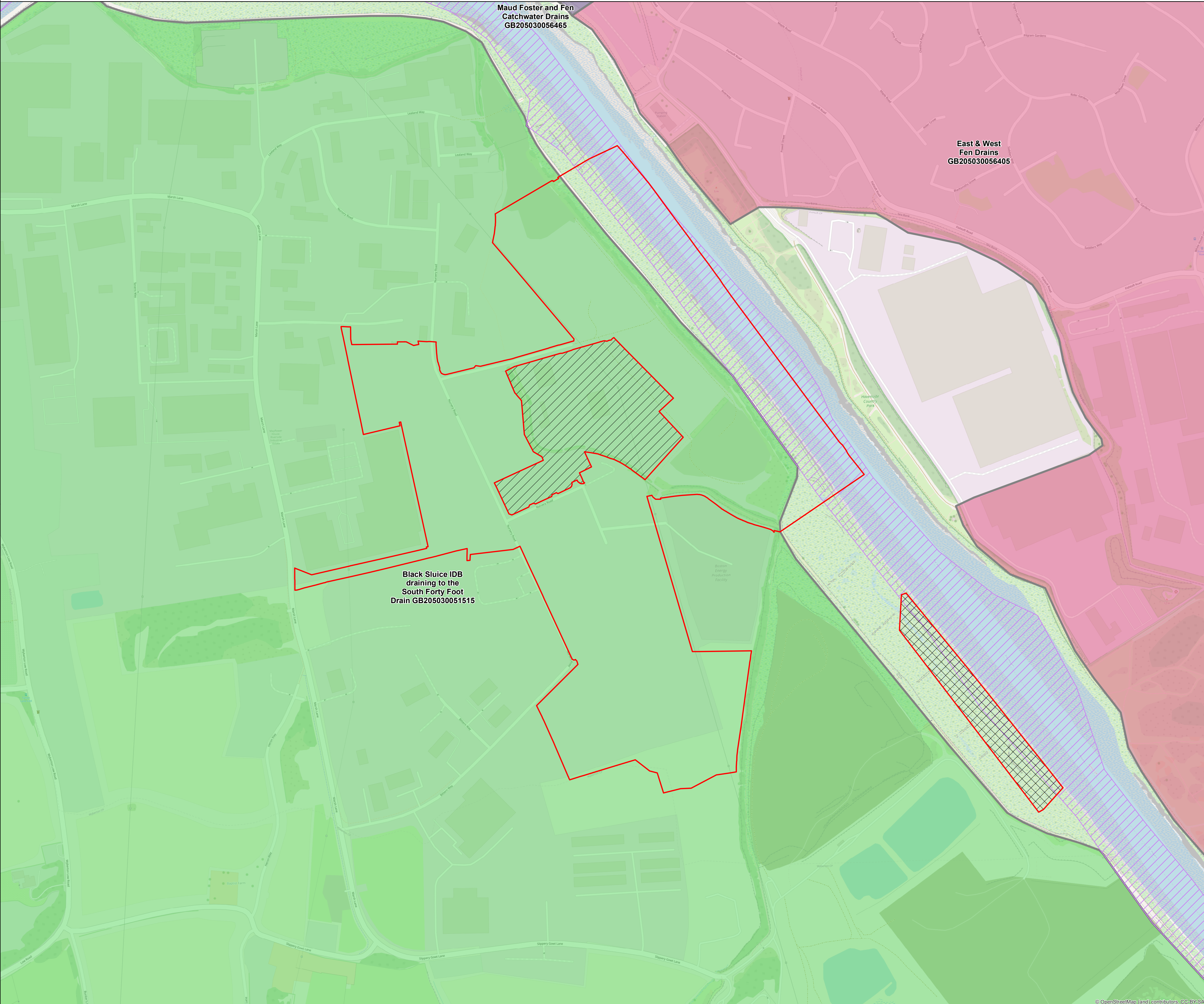
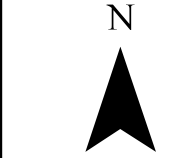
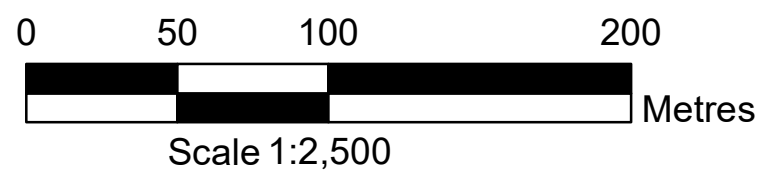
REV	DATE	DESCRIPTION	BY	CHK	APP
0	19/03/21	For Submission	JT	AG	PS

TITLE **BOSTON ALTERNATIVE ENERGY FACILITY  
 DEVELOPMENT CONSENT ORDER**  
**Regulation 5(2)(o) Overview of Water Bodies in a River Basin  
 Management Plan**  
**BOSTON BOROUGH COUNCIL - Sheet 1 of 1**

Application Number <b>EN010095</b>		
DRAWN <b>JT</b>	CHECKED <b>AG</b>	APPROVED <b>PS</b>
DATE <b>19/03/21</b>	SCALE @A1 <b>1:40,000</b>	REF <b>PB6934</b>
DRAWING NUMBER <b>PB6934-RHD-01-ZZ-DR-4017</b>	STATUS <b>SO</b>	REVISION <b>0</b>



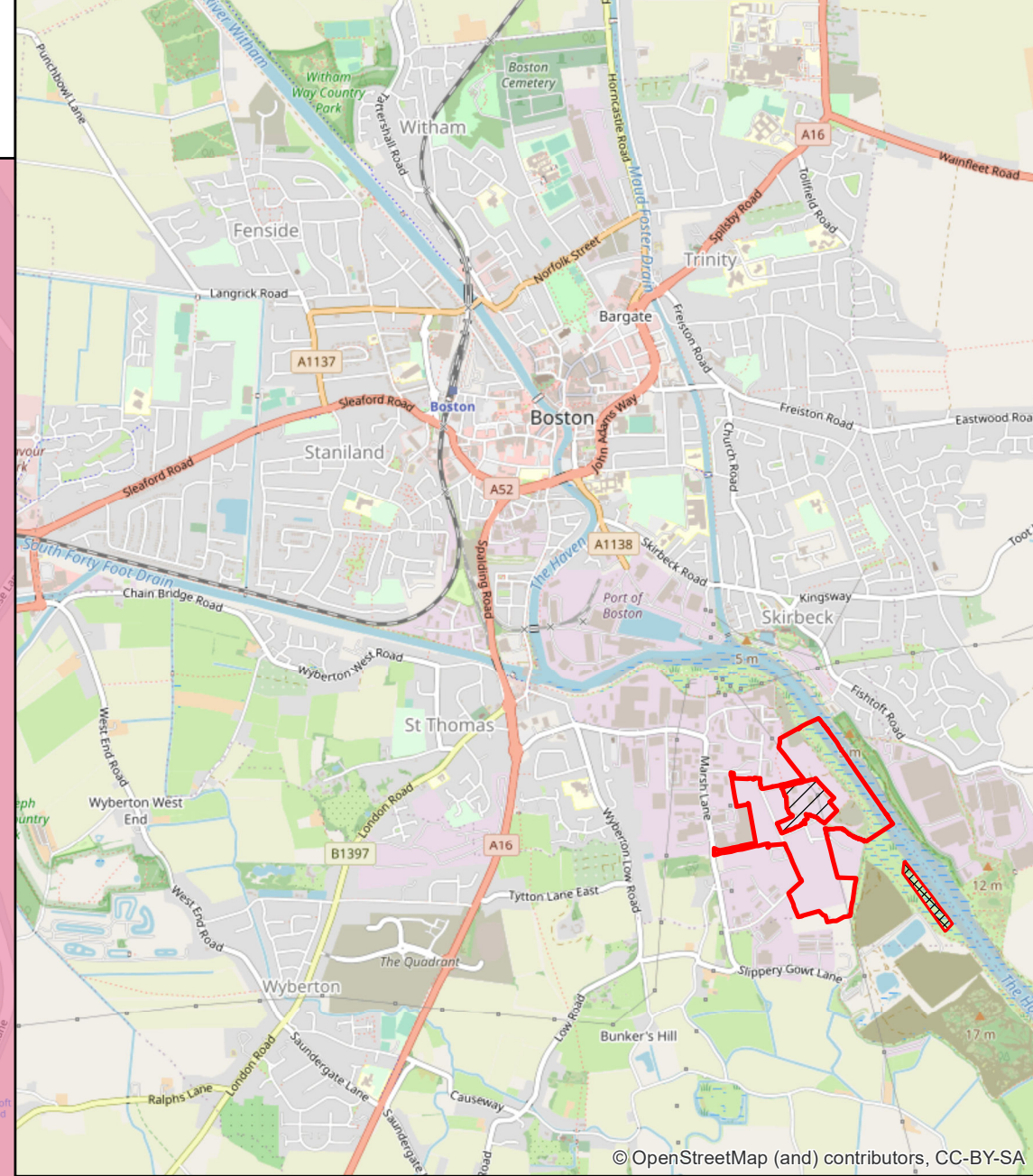
**BOSTON ALTERNATIVE ENERGY FACILITY DEVELOPMENT CONSENT ORDER**  
**Regulation 5(2)(l)(iii) Water Bodies in a River Basin Management Plan**  
**BOSTON BOROUGH COUNCIL - Sheet 1 of 1**



Maud Foster and Fen  
Catchwater Drains  
GB205030056465

East & West  
Fen Drains  
GB205030056405

Black Sluice IDB  
draining to the  
South Forty Foot  
Drain GB205030051515



**Key**

- Order limits
- Habitat Mitigation Area
- Land outside Order limits

**Water Framework Directive (WFD) River Water Body Catchment Area**

- Black Sluice IDB draining to the South Forty Foot Drain
- East & West Fen Drains
- Maud Foster and Fen Catchwater Drains

**Water Framework Directive (WFD) Transitional and Coastal Water Bodies**

- Witham


**Royal HaskoningDHV**  
*Enhancing Society Together*

Rightwell House,  
 Bretton,  
 Peterborough, PE3 8DW  
 Tel +44 (0)1733 334455  
 Email [info.peterborough@rhdhv.com](mailto:info.peterborough@rhdhv.com)  
 Website [www.royalhaskoningdhv.com](http://www.royalhaskoningdhv.com)

APPLICANT **ALTERNATIVE USE  
BOSTON PROJECTS LTD**

Disclaimer  
 Do not scale from this drawing. Check all dimensions on site before fabrication or setting out. This document is copyright and may not be reproduced without permission of the owner.

REPRODUCED FROM ORDNANCE SURVEY MAPS  
 WITH PERMISSION FROM  
 THE CONTROLLER OF  
 HER MAJESTY'S STATIONERY OFFICE.  
 CROWN COPYRIGHT RESERVED.  
 LICENCE NUMBER. 100017728

REV	DATE	DESCRIPTION	BY	CHK	APP
0	19/03/21	For Submission	JT	AG	PS

**TITLE**  
**BOSTON ALTERNATIVE ENERGY FACILITY  
 DEVELOPMENT CONSENT ORDER**  
**Regulation 5(2)(l)(iii) Water Bodies in a River Basin  
 Management Plan**  
**BOSTON BOROUGH COUNCIL - Sheet 1 of 1**

Application Number <b>EN010095</b>			
DRAWN <b>JT</b>	CHECKED <b>AG</b>	APPROVED <b>PS</b>	
DATE <b>19/03/21</b>	SCALE @A1 <b>1:2,500</b>	REF <b>PB6934</b>	
DRAWING NUMBER <b>PB6934-RHD-01-ZZ-DR-4018</b>		STATUS <b>SO</b>	REVISION <b>0</b>